

Quality Management Software

PROFIBUS Scripting Host

Develop your
PROFIBUS devices
interactively.

Automate your
device tests
easily.

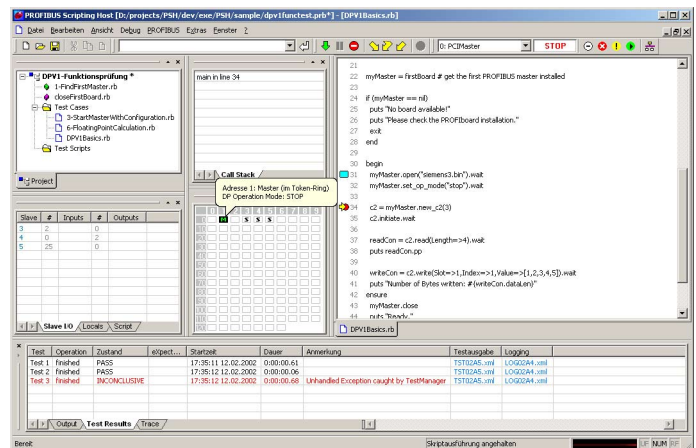
Bring your
PROFIBUS devices
into service.

- PROFIBUS highly comfortable
- apply PROFIBUS tasks "On-the-Fly"

- arrange tests
- documentation created automatically
- reproduction and regression

- best PROFIBUS overview
- your PROFIBUS toolbox

- easy operation by means of powerful PROFIBUS user interface controls updated continuously:
 - Live-List control with diagnostic and config data
 - DP slave I/O with integrated status
 - PROFIBUS toolbar for simplest Master control
 - clear text for all services and messages
- Test Management System for automated execution and administration of test cases
 - definition of expectations and results
 - logging in open XML format
 - automatic test reports in HTML format
- all PROFIBUS DP und DP/V1 services (class 2) available (e.g. for PA devices)
- PROFIBUS baudrates up to 12MBit/s
- Multi-Master support



- comfortable project handling with workspaces
- fully automatable
- interactive PROFIBUS intervention at any time
- modern open script language "Ruby" (comparable to Perl)
 - PROFIBUS completely encapsulated
 - extensive libraries for all purposes (internet, office, arithmetic, user specific ...)
 - object oriented, threading, synchronization, exception handling, time-outs, ...
- integrated debugger with breakpoints, watch, call stack
- substantial documentation, online tutorial and reference

Highly flexible and adaptable in your projects – **contact us!**

System requirements:

- Intel Pentium compatible PC
- Microsoft Windows NT4.0 SP6, Internet Explorer 5.0 or higher, min. 64MB RAM
- Microsoft Windows 2000 min. 128MB RAM
- min. 10MB available harddisk space
- Softing PROFIBoard hardware running Win32 driver software (firmware v5.23 or higher)
- Without Hardware the software will run in demonstration mode with PROFIBUS simulated.